



 **Ashmount**



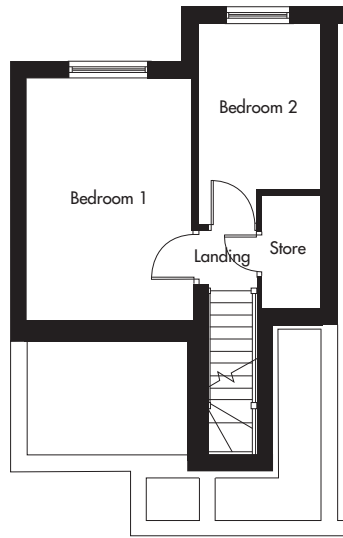
HERONDALE & INNISDALE - 2 BEDROOM APARTMENTS

- CENTRAL HEATING • FITTED KITCHEN • FRENCH DOORS & BALCONY

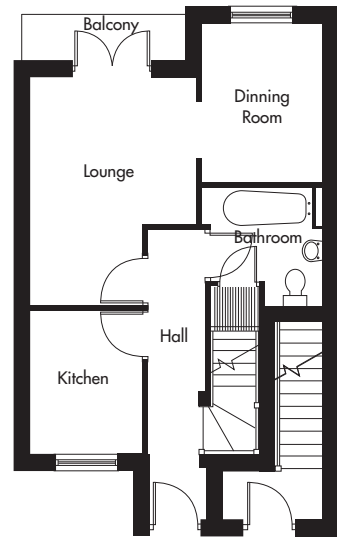


HERONDALE & INNISDALE - 2 BEDROOM APARTMENTS

Herondale - Lower Ground Floor PLOT 13 & 16 **Herondale - Ground Floor**

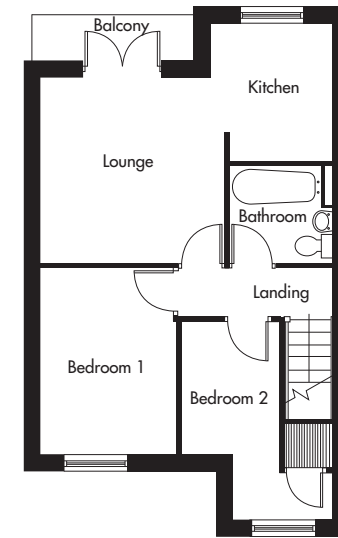


Bedroom 1	4.47 x 2.97	14' 8" x 9' 9"
Bedroom 2	3.74 x 2.19	12' 3" x 7' 2"
Store	2.10 x 1.00	6' 11" x 3' 3"



Lounge	4.26 x 3.10	14' 00" x 10' 2"
Dinning Room	3.00 x 2.31	9' 10" x 7' 7"
Bathroom	2.46 x 1.45	8' 1" x 7' 7"
Kitchen	2.70 x 2.01	8' 10" x 6' 7"

Innisdale - First Floor PLOT 14 & 15



Lounge	3.50 x 3.47	11' 6" x 11' 5"
Landing	2.90 x 0.90	9' 6" x 2' 11"
Bathroom	1.95 x 1.81	6' 5" x 5' 11"
Kitchen	2.56 x 2.25	8' 5" x 7' 5"
Bedroom 1	3.50 x 2.57	11' 6" x 8' 5"
Bedroom 2	3.70 x 1.85	12' 2" x 6' 1"

